

PÖTTINGER HIT

Trailed tedders



Find out more online!



97+025.02.0712





HIT 10.11 T / HIT 12.14 T

Trailed tedder

Simply producing agricultural technology is not enough; the growing needs of agriculture must also be met. Pöttinger has met this great challenge once again with its impressive new development, the HIT T generation.

Experience has shown that tedders for large areas are a necessity. Pöttinger's highest priority in developing such a tedder was to achieve robust reliability and high functionality, coupled with perfect ground adaptation despite working widths of 34.78' / 10.60 m or 41.67' / 12.70 m. HIT 10.11 T and HIT 12.14 are impressive solutions for the market.



Your benefits at a glance:

- Upper or lower hitch by rotating the drawbar
- Robust main frame – tyres 260/70-15.3
- Compact transportation with automatic folding side guard
- Comfortable operation – work sequences are managed automatically
- Central adjustment of working height via crank handle
- "Liftmatic plus" for high lifting at headlands
- 35.43" / 900 mm ground clearance when raised and turning
- Rotation of frame for horizontal positioning of the rotor before lifting



HIT 10.11 T / 12.14 T

Mounting and chassis

The frame and chassis have been designed to be robust, in order to meet the demands for high transportation speeds. The large tyres also play an important role here.

Universal drawbar for high or low hitches

- The benefits of the trailed Pöttinger tedder generation start with the hitch, with its bolted universal drawbar for high and low hitches, simply rotate by 180°.
- Lower linkage mounting is available as an option to provide even more extensive clearance. The machine follows the tractor tracks even better.
- A large main frame with a strong rotor support and 260/70-15.3 tyres (or 350/50-16 as an option) make it possible to transport the machine at high speeds on roads without swaying.
- The side-mounted guard folds automatically.
- All functions are operated via a single-acting and double-acting service from on the tractor.
- This is made possible by using a series of valves with consistent sequence control.



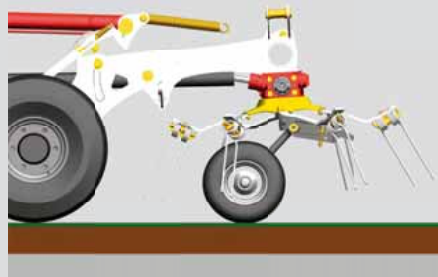
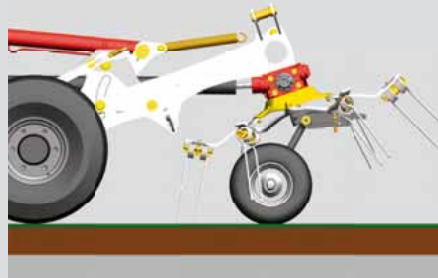
Lower linkage mounting



Liftmatic plus

Unique headland position

- Before being raised, the rotors are positioned horizontally using a hydraulic cylinder and then lifted. This ensures that the tines do not scrape against the ground.
- The forage remains clean and the turf is protected.
- An essential feature is the high headland position, with 35.43" / 900 mm clearance.



Clean forage is the main goal for the harvest chain when it comes to increasing livestock milk production and feed conversion. It must therefore be possible to adjust the optimum working position of the tedder simply and properly.

Perfect rotor steering – Multitast effect for perfect distribution quality

- The chassis wheels are close to the tine contacts and therefore serve as jockey wheels for the rotors.
- Combined with the minimal rotor diameter, this ensures top distribution quality.
- Working height is set centrally via a manual crank handle and remains the same, regardless of the mounting height.

The frame and chassis do not put any load on the rotors

- No additional weight load, resulting in even load distribution on all rotor wheels.





Unique DynaTech rotor

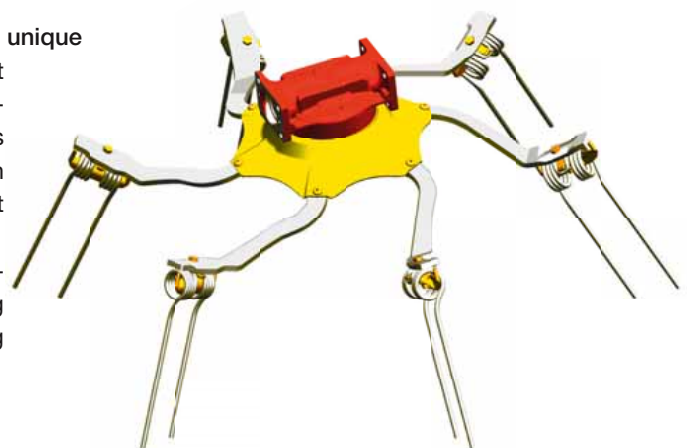
Trailed Pöttinger tedders guarantee high performance because they are designed for long-term use in tough conditions. The rotors were therefore completely redesigned.

Beautifully designed and functional

- A completely new development is the bolting of the tine arms to the rotors. The rotor plates are extra-thick moulded components with precise positioning for the tine arms.
- The arms are also bolted to the rotor hubs to ensure an extremely secure mounting.

The curved shape of the arms is unique

- The trailed tine arrangement reduces the load on the bearing and simultaneously allows the trailed tines to work with less pressure and thus protect the forage.
- The curved shape also prevents forage from building up in the arms and wrapping around the rotors.





Robust design

- The rotors are mounted on a bolted frame. The front guard mounting also increases stability as its designed to be a supporting element.
- The frame pivot points use wide supports and offer low-maintenance.

Powerful rotor drive

- Sealed-for-life single and double joints transfer the drive power to the rotor gearbox without play and therefore extremely smoothly.
- A power drive coupling makes it possible for the outer rotors only to be folded through 180°.
- Each rotor is guided by one frame joint for optimum ground adaptation.



Simple operation

The trailed HIT T tedders are simple and practical to operate for all functions.

Rotor pitch can be adjusted without tools

- The working height of the tines can be adjusted centrally via the crank handle.
- The rotor pitch can be adjusted to individual requirements in three different positions without tools.

Practical fenceline spreading (option)

- Hydraulic adjustment of two rear outer rotors 15° diagonally backwards.
- Operated via the a cable controlled valve using the double acting hydraulic service.





Technical data	HIT 10.11 T	HIT 12.14 T
Working width	37.78' / 10.60 m	47.67' / 12.70 m
Rotor	10	12
Arms per rotor	6	6
Rotor diameter	4.66' / 1.42 m	4.66' / 1.42 m
Transport width	9.51' / 2.90 m	9.51' / 2.90 m
Transport length	18.37' / 5.60 m	18.37' / 5.60 m
Transport height	8.86' / 2.70 m	8.86' / 2.70 m
Tyres — rotor	16x6.5-8	16x6.5-8
Tyres — chassis	260/70-15.3	260/70-15.3
Acres / hectares per hour	19.8 / 8	27.7 / 10
Power requirement from	55 kW / 75 HP	55 kW / 75 HP
Weight	4365 lbs / 1980 kg	5071 lbs / 2300 kg

All information is provided without obligation. Fittings can vary from country to country.

Optional equipment

- Lower linkage
- Tyres 350/50-16
- Fenceline spreading system



Poettinger Australia P/L
 15 Fordson Road
 Campbellfield, VIC 3061
 Phone: +61 3 9359 2969
 E-mail: sales.au@poettinger.com.au
 www.poettinger.com.au

Importer for Ireland:
T. Traynor & Sons Ltd.
 Cashel Road, Clonmel
 Co. Tipperary
 Phone: +353 (0) 52 / 257 66
 E-mail: info@traynor.ie

Importer for New Zealand:
Origin Agrup
 PO Box 673, 57 Hautapu Road
 Cambridge – New Zealand
 Phone: +64 7 823 7582
 E-mail: info@originagroup.co.nz
 www.originagroup.co.nz

Importer for South Africa:
VALTRAC
 Cnr. Water & Buiten Street
 9585 Parys
 Tel.: +27 / (0) 56 817 7338 / 7308
 E-Mail: wynn@valtrac.co.za
 www.valtrac.co.za

Alois Pöttinger
Maschinenfabrik GmbH
 Industriegelände 1
 A-4710 Grieskirchen
 Phone: +43 (0) 7248/600-0
 E-mail: landtechnik@poettinger.at

Alois Pottinger UK Ltd
 St Marks Road
 Corby
 Northamptonshire NN18 8AN
 England
 E-mail: info@pottingeruk.co.uk
 www.pottingeruk.co.uk

Poettinger Canada Inc.
 650, Route 112
 St-Cesaire, J0L 1 T0, PQ
 Phone: (450) 469-5594
 E-Mail: sales.canada@poettinger.ca
 Web: www.poettinger.ca

Poettinger US Inc.
 393 Pilot Drive
 Valparaiso, IN 46383
 Tel: (219) 510-5534
 E-mail: sales.us@poettinger.us
 www.poettinger.us